

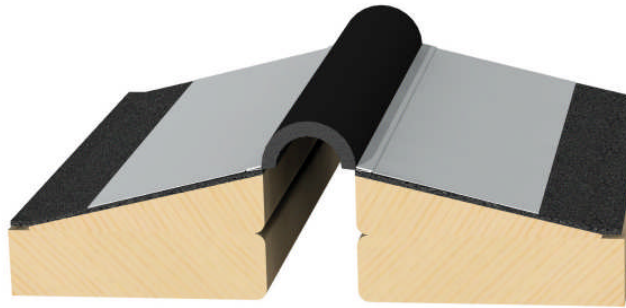
Architectural Art Mfg.

A division of Pittcon Architectural Metals, LLC

Tech Data Sheet

T Series

Expansion Joint Cover System



T20-82-79 Illustrated

Description:

The T Series is a Bellows system designed for roof expansion joint applications. It has metal flanges to provide mechanical attachment of the bellows cover to the roof or cant that allows plus and minus 50% thermal and seismic movement in nominal expansion joint gaps of 1" to 6". It has an optional internal moisture barrier that can be directed to drains or exterior wall covers to evacuate water.

Options:

Roof to Roof, Roof to wall, Flanges made of Aluminum, Stainless Steel, Copper or Galvanized.

Typical applications:

Low rise cant and curb conditions, surface mount conditions.

6409 Rhode Island Avenue, Riverdale, Maryland 20737-1098
Phone (301) 927-1000 Fax (800) 897-3129