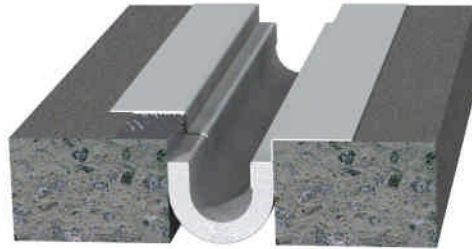




Architectural Art Mfg.
A division of Pittcon Architectural Metals, LLC

Tech Data Sheet

P Series Fire Barriers for Expansion Joint Cover Systems



P40-FF-02 Illustrated

Description:

The P Series are fire barrier systems designed for floor, wall and ceiling expansion joint applications. It is a mechanically attached life safety system that is designed to maintain the fire rating of the adjacent structure at the expansion joint opening. This is a component of a listed and labeled assembly adhering to testing criteria outlined in UL2079 requiring ratings for Flame, Heat and Air leakage and tested for movement, positive pressure and hose stream requirements. These typically accompany other expansion joint cover systems to provide a finished application.

Options:

Floor to Floor, Floor to Wall, for concrete applications. Wall to Wall, Wall to Ceiling, Ceiling to Ceiling, Ceiling to Wall for fire rated gypsum board applications. Available for joints sizes from 1" to 30" maximum openings.

Applications:

For use with Interior structures and open air structures.

6409 Rhode Island Avenue, Riverdale, Maryland 20737-1098
Phone (301) 927-1000 Fax (800) 897-3129



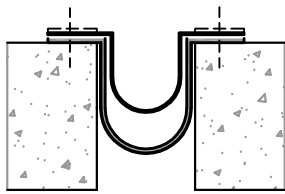
Architectural Art Mfg.
A division of Pittcon Architectural Metals, LLC

P30 Series Ultra Thin UL® Design:

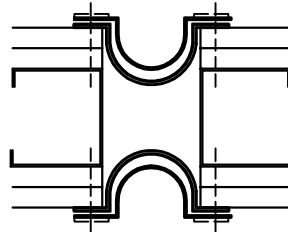
Product(s):	P30 Series
Fire Ratings:	1 and 2 Hour construction
Applications:	Floors and Walls
Construction:	Concrete, Gypsum
Joint Sizes:	1" and 2" Nominal Joints
Movement:	Plus and minus 50%
Design Standard:	UL2079
Tests:	Flame, Thermal, L air leakage, Hose Stream, Splice, Cycle UL2079 Class 1,2,3, ASTM E1399 Class 1,2,3, 4



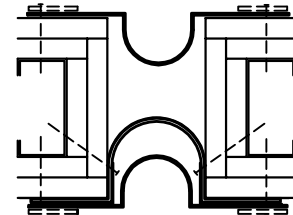
This versatile fire barrier can be installed in 3 different configurations with the same material.



P30-11-02 TOP MOUNT FLOOR
UL# FF-D-0072



P30-51-02 DUAL SIDE WALL
UL# WW-D-0087



P30-54-02 SINGLE SIDE WALL
UL# WW-D-0088

2 Hour construction shown. 1 Hour construction per UL Standards also allowable. See UL Listings.

Available for corner installations as well

Note: No EJ Cover Required for Fire Rating in floors or walls

P30 SERIES Ultra Thin- SELECTION GUIDE										
DESIGNATION	JOINT OPENING						TOTAL MOVEMENT		Design Listing	
	MINIMUM		NOMINAL		MAXIMUM					
P30-11-02	0.5	13	1 or 2	25-50	3.0	75	2.5	64	UL	FF-D-0072
P30-51-02	0.5	13	1 or 2	25-50	3.0	75	2.5	64	UL	WW-D-0087
P30-54-02	0.5	13	1 or 2	25-50	3.0	75	2.5	64	UL	WW-D-0088

Bold numbers are in inches. Others are millimeters

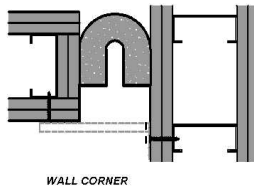
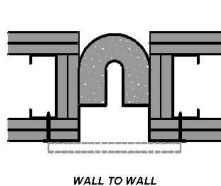
6409 Rhode Island Avenue, Riverdale, Maryland 20737-1098
Phone (301) 927-1000 Fax (800) 897-3129



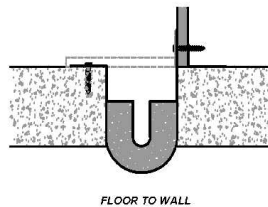
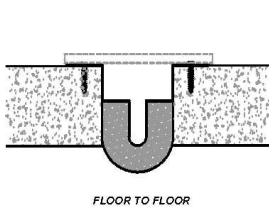
Architectural Art Mfg.
A division of Pittcon Architectural Metals, LLC

P Series UL® Designs up to 30” max JT:

Product(s): P Series 1” – 20” Nom JT (max 30” at 50% extension)
 Fire Ratings: 1 and 2 Hour construction
 Applications: Floors and Walls
 Construction: Concrete Floors, Gypsum or Block Walls
 Movement: Plus and Minus 50%
 Design Standard: UL2079
 Tests: Flame, Thermal, L air leakage, Hose Stream, Splice, Cycle UL2079 Class 1,2,3
 ASTM E1399 Class 1,2,3,4
 Listings: UL#’s see below



Wall Nom. Joint Sizes	UL Design#
1-2”	WW-D-0065, WW-D-0066
3- 6”	WW-D-1059, WW-D-1060
8-12”	WW-D-2014, WW-D-2015
14-20”	WW-D-3013, WW-D-3014



Floor Nom. Joint Sizes	UL Design#
1-2”	FF-D-0003, FF-D-0057
3- 6”	FF-D-1009, FF-D-1069
8-12”	FF-D-2001, FF-D-2010
14-20”	FF-D-3001, FF-D-3010

2 Hour construction shown. 1 Hour construction per UL Standards also allowable. See UL Listings.
 Note: *EJ Covers are Required for Fire Rating at floors and walls*

P SERIES UL up to 30” Max JT - SELECTION GUIDE									
DESIGNATION	JOINT OPENING					TOTAL MOVEMENT	Design Listing		
	MINIMUM		NOMINAL		MAXIMUM				
P()-FF-02	0.5	13	1- 20	25-508	30.0	762	50%	UL	
P()-FW-02	0.5	13	1- 20	25-508	30.0	762	50%	UL	
P()-WW-02	0.5	13	1- 20	25-508	30.0	762	50%	UL	
P()-WC-02	0.5	13	1- 20	25-508	30.0	762	50%	UL	

Bold numbers are in inches. Others are millimeters

6409 Rhode Island Avenue, Riverdale, Maryland 20737-1098
 Phone (301) 927-1000 Fax (800) 897-3129