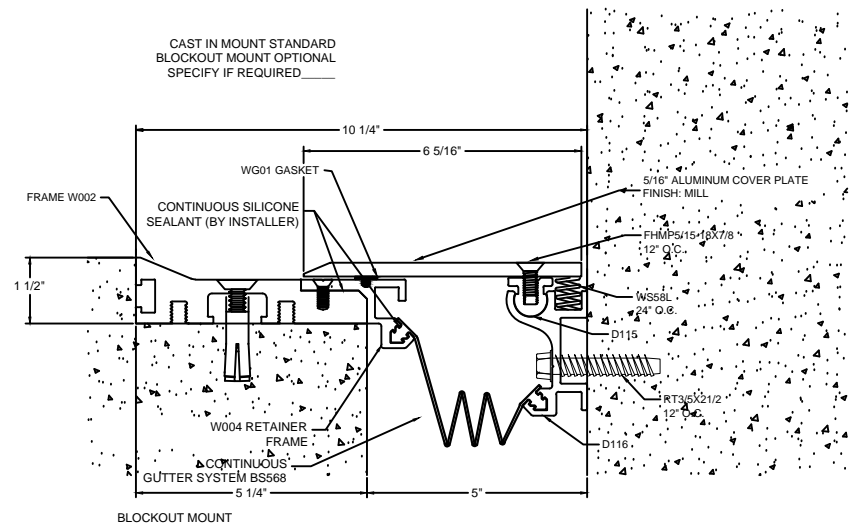


DESCRIPTION: FLOOR-TO-WALL
ALUMINUM: 6061-T6
SEALS: TPE 591-65A
EXPOSED FINISH: MILL
MOVEMENT: PLUS OR MINUS 50%
STOCK LENGTHS: 10'-0"

W50-CIC-AL
FORMERLY W50-42-11



DESCRIPTION: FLOOR-TO-WALL
ALUMINUM: 6061-T6
SEALS: TPE 591-65A
EXPOSED FINISH: MILL
MOVEMENT: PLUS OR MINUS 50%
STOCK LENGTHS: 10'-0"

W50-CIC-AL
FORMERLY W50-42-11



**Architectural Art
MANUFACTURING**

Division of Pittcon Architectural Metals, LLC
283 SWANSON DRIVE, STE 103
LAWRENCEVILLE, GA 30043
PH: (678) 680-7373 FAX: (678) 735-0085
TOLL FREE: (800) 835-0028 web: www.archart.com

CAST-IN FLOOR TO WALL SYSTEM

MODEL: W50-CIC-AL

DRAWN BY:
NDC

SHT. 1 OF 1

SCALE:
NTS

ISSUE DATE:
6/11/09

DRAWING NO.:

DTL-01

NO.	DESCRIPTION	BY	DATE

REVISIONS

The information contained herein is the proprietary property of **ARCHITECTURAL ART MFG.**, Division of Pittcon Architectural Metals, LLC. No portion of it may be reproduced by any means or used in any form except for the purpose for which it was furnished. All rights of design and invention are hereby reserved. We reserve the right to make changes in the design at our discretion.