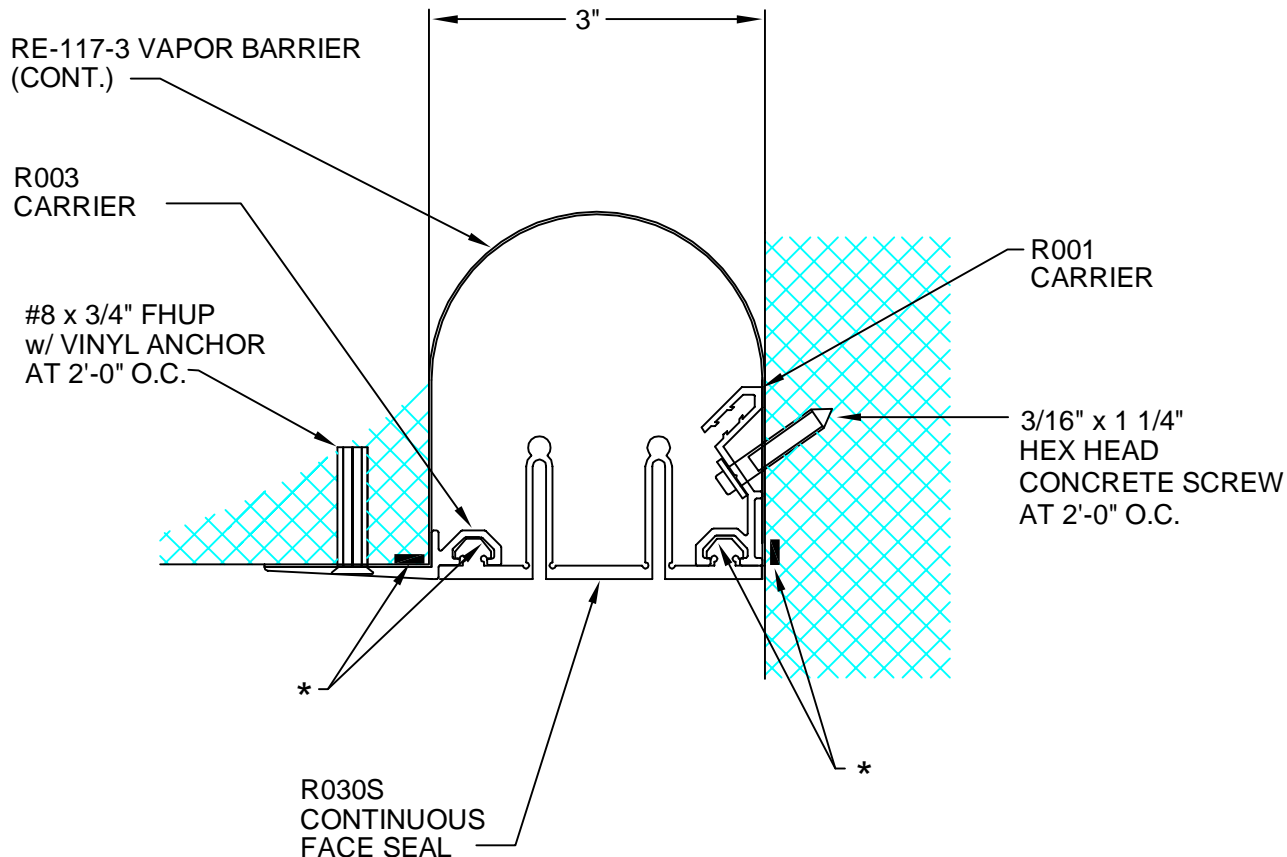


# R30-64-94E

REV. 12/06



\* CONTINUOUS ADHESIVE / SEALANT

DESCRIPTION: EXTERIOR WALL TO CORNER  
 ALUMINUM: 6063-T5 EXTRUSION  
 FACE SEAL: SANTOPRENE; BLACK, BROWN, BEIGE, GRAY, WHITE  
 ALLOWABLE LOAD: -NOT DESIGNED FOR STRUCTURAL LOADS-  
 MOVEMENT: + 100% TENSION/COMPRESSION TO 1 1/4"  
 STOCK LENGTHS: 20'-0" (ALUMINUM)

CUSTOMER:		
PROJECT:		
LOCATION:		
ARCHITECT:		
CONTRACTOR:		
NOTE:		
JOB NO.:	DATE:	SCALE: (NTS)

LENGTH:	QTY:	COLOR/FINISH: