

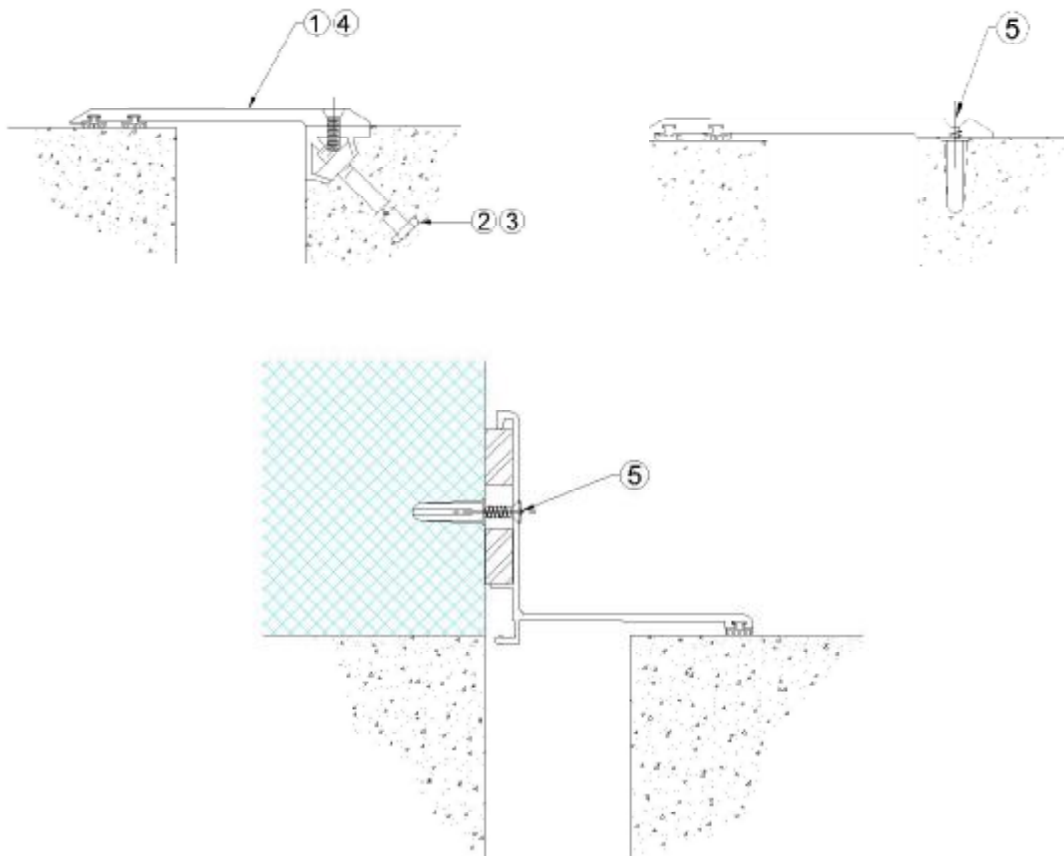
### INSTALLATION INSTRUCTIONS

Each installation may have unique situations that cannot be covered by the following guidelines. Please call 1-800-835-0028 if you have questions.

# K01

REV 10/06

- Step 1: Remove cover plate from embed extrusion and retain for reinstallation later. It must be installed in the same location that it is removed.
- Step 2: Add anchors (FE-82) to carrier and tighten snug at 1'-6" on center.
- Step 3: Cast embed extrusion in concrete. It is important that the embed is level and flush with concrete.
- Step 4: Reinstall cover plate after finished floor is complete on the opposite side of embed.
- Step 5: Position the saddle (floor) or K15/2034-11 (floor to wall) extrusions as dimensioned on technical detail and mark for plastic plug locations. Remove assembly, drill and install plastic plugs. Position the extrusions and install screws accordingly.



**ARCHITECTURAL ART MFG.**  
6409 Rhode Island Ave. Riverdale, MD 20737



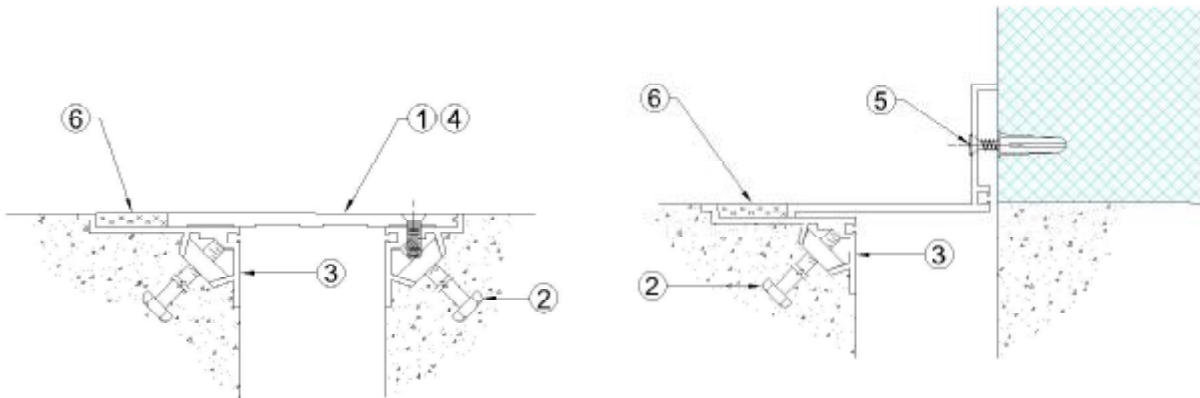
### INSTALLATION INSTRUCTIONS

Each installation may have unique situations that cannot be covered by the following guidelines. Please call 1-800-835-0028 if you have questions.

# K02

REV 10/06

- Step 1: Remove cover plate from embed extrusion and retain for reinstallation later. It must be installed in the same location that it is removed.
- Step 2.: Add anchors (FE-82) to carrier and tighten snug at 1'-6" on center.
- Step 3: Cast embed extrusion in concrete. It is important that the embed is level and flush with concrete.
- Step 4: Reinstall cover plate after finished floor is complete on the opposite side of embed.
- Step 5: Position the floor to wall extrusion as dimensioned on technical detail. Mark for plastic plug locations. Remove assembly, drill and install plastic plugs. Position the extrusion and install screws accordingly.
- Step 6: Install filler strip to carrier.



**ARCHITECTURAL ART MFG.**  
6409 Rhode Island Ave. Riverdale, MD 20737



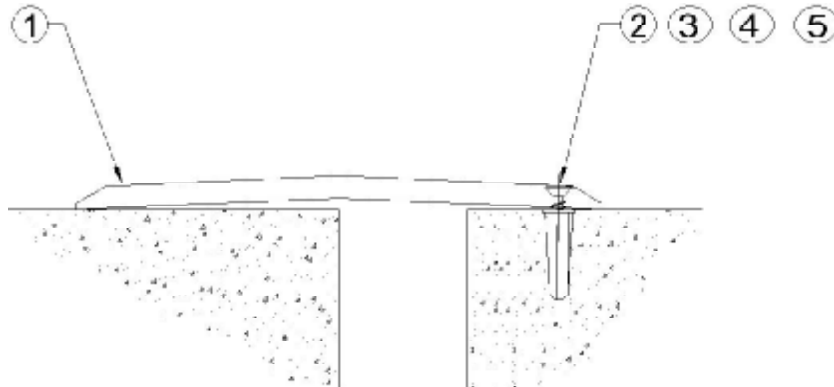
### INSTALLATION INSTRUCTIONS

Each installation may have unique situations that cannot be covered by the following guidelines. Please call 1-800-835-0028 if you have questions.

# K03

REV 10/06

- Step 1: Position plate over expansion joint as dimensioned on detail sheet.
- Step 2.: Mark locations for plastic plug anchors through factory-drilled holes in plate.
- Step 3: Remove plate and drill holes.
- Step 4: Tap in plastic plug anchors and position plate for fastening.
- Step 5: Fasten plate to floor with factory-provided #10 x 1" zinc plated F.H.W.S.



**ARCHITECTURAL ART MFG.**  
6409 Rhode Island Ave. Riverdale, MD 20737



### INSTALLATION INSTRUCTIONS

Each installation may have unique situations that cannot be covered by the following guidelines. Please call 1-800-835-0028 if you have questions.

# K04

REV 10/06

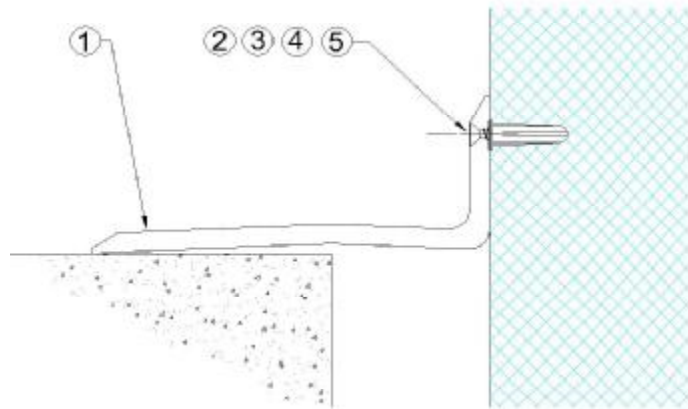
Step 1: Position plate over expansion joint as dimensioned on detail sheet.

Step 2.: Mark locations on wall for plastic plug anchors through factory-drilled holes in plate.

Step 3: Remove plate and drill holes.

Step 4: Tap in plastic plug anchors and position plate for fastening.

Step 5: Fasten plate to wall with factory-provided #10 x 1" zinc plated F.H.W.S.



**ARCHITECTURAL ART MFG.**  
6409 Rhode Island Ave. Riverdale, MD 20737

