

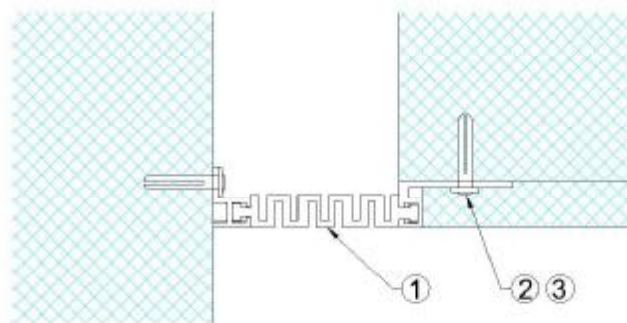
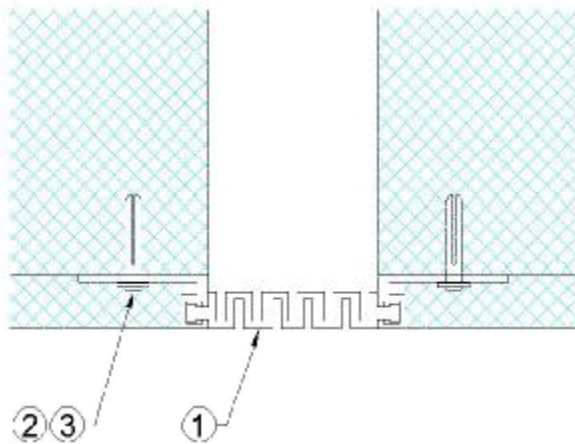
### INSTALLATION INSTRUCTIONS

Each installation may have unique situations that cannot be covered by the following guidelines. Please call 1-800-835-0028 if you have questions.

# J01

REV 10/06

- Step 1: Position vinyl insert and push into extrusion tracks, making sure vinyl is locked into position. To avoid future gaps at ends and intersections, **DO NOT** stretch vinyl lengthwise during installation.
- Step 2: Position the assembly and drill 3/16" holes to a minimum depth of 1" into wall using drill track on the extrusion as a guide.
- Step 3: Push nylon anchors through holes into wall and drive tight.



**ARCHITECTURAL ART MFG.**  
6409 Rhode Island Ave. Riverdale, MD 20737



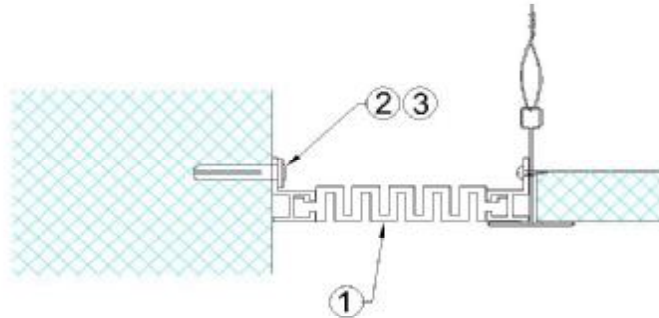
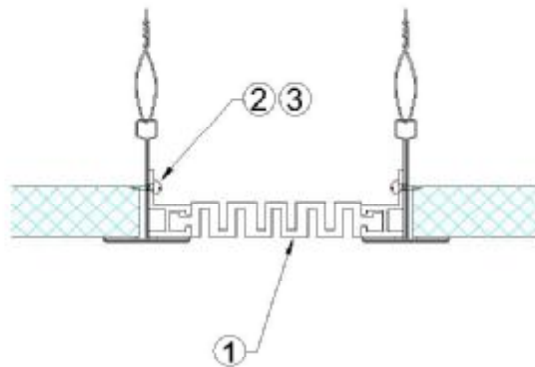
### INSTALLATION INSTRUCTIONS

Each installation may have unique situations that cannot be covered by the following guidelines. Please call 1-800-835-0028 if you have questions.

# J02

REV 10/06

- Step 1: Position vinyl insert and push into extrusion tracks, making sure it is locked into position. To avoid future gaps at ends and intersections, DO NOT stretch vinyl lengthwise during installation.
- Step 2: Position the assembly and drill pilot hole for #6 S.M.S. into ceiling tee or 3/16" hole to a minimum depth of 1" into wall on appropriate conditions.
- Step 3: Push nylon anchors through holes into wall and drive tight or install #6 S.M.S. into ceiling tee.



**ARCHITECTURAL ART MFG.**  
6409 Rhode Island Ave. Riverdale, MD 20737

