

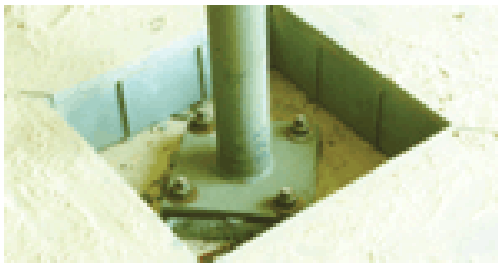
Architectural Art Mfg.

A division of Pittcon Architectural Metals, LLC

Installation Instructions

PFI®

Pocket Form Isolator



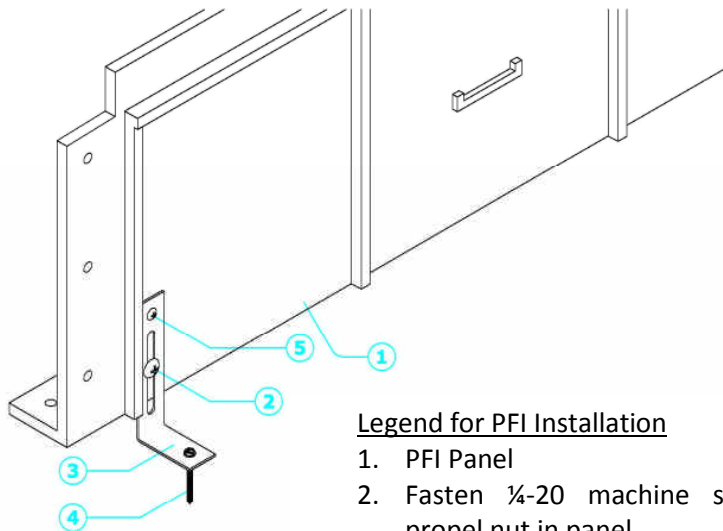
Stay In Place
Concrete Form



F24-SQ-08

F24-SQ-LD

A guide to preparation and installation of Architectural Art products



Legend for PFI Installation

1. PFI Panel
2. Fasten 1/4-20 machine screw into threaded propel nut in panel
3. Locking Lift Panel
4. Drill and place Tapcon into concrete footing
5. Set screw to maintain placement of panel

6409 Rhode Island Avenue, Riverdale, Maryland 20737-1098
Phone (800) 835-0028 Fax (678-735-0085)